



## USER GUIDE



800-788-5572 | [DuraLabel.com](http://DuraLabel.com)

# CONTENTS

1. Introduction.....	↪ Page 3
2. Safety Instructions .....	↪ Page 4
3. Getting to Know Your Kodiak .....	↪ Page 5
4. Kodiak Max Home Screen .....	↪ Page 7
5. Loading Supply .....	↪ Page 10
6. Loading Ribbon.....	↪ Page 11
7. Network Connection.....	↪ Page 12
8. Connecting Kodiak to a PC (Optional) .....	↪ Page 13
9. Printer Preferences .....	↪ Page 17
10. System Utilities .....	↪ Page 19
11.Cleaning Kodiak Max .....	↪ Page 21
12. Specifications .....	↪ Page 23
13. Certifications .....	↪ Page 24
14. Third-Party Software.....	↪ Page 25
15. Warranties .....	↪ Page 26



## DuraLabel KODIAK MAX

### Kodiak Max Interactive User Guide

Use the “Next” and “Previous” buttons to navigate from page to page. If you’d like to return to this page at any time, just hit the “Home” icon at the bottom of each page.



*\*May not be available on all PDF viewing software*



A GRAPHIC PRODUCTS BRAND  
Graphic Products®, DuraLabel®, PathFinder®, Toro Max®, Bronco Max®, Lobo® and Kodiak Max® are Registered Trademarks of Graphic Products, Inc. © 2024 Graphic Products, Inc.





# 1

## INTRODUCTION

With your DuraLabel Kodiak Max, you can create fully customized industrial signs and labels, on-site and on-demand.

Kodiak Max uses built-in design software and two-color printing capabilities for powerful, effective, and efficient sign creation. You can also use the included LabelForge PRO signage design software to create designs on your PC, printing them on Kodiak Max using a standard USB connection. Kodiak Max can even connect to a wireless network and dynamically populate your label designs with information from a database, using ODBC functionality.

This guide will provide information and instructions on your Kodiak Max. You can also watch instructional videos right on your system, and you can get help from DuraLabel support team by calling **800-788-5572** or visiting ***DuraLabel.com***.





# 2

## SAFETY INSTRUCTIONS

Please review the following safety instructions before using the printer:

- Kodiak Max is intended for indoor use only. Keep the printer away from extreme humidity (>85%) and prolonged exposure to direct sunlight.
- Disconnect the printer from its power source when not in use.
- Do not pour liquids onto the printer or printer parts. For ordinary cleaning, follow the instructions included in this guide.
- Only qualified service personnel should attempt to repair the printer.
- Kodiak Max supply may build a small static charge during loading or use. Do not operate near flammable materials.
- Never attempt to move or lift the printer by yourself; two person lift required.



NOTE: Changes or modifications not expressly approved by the party responsible for compliance could void the user's authority to operate the equipment.

In addition, to prevent damage to Kodiak Max and to avoid nullifying the printer warranty, please follow these rules:

- Only use authentic Kodiak Max supplies from DuraLabel in your printer.
- Read all instructions in this user guide completely.

If something seems to be wrong with Kodiak Max, refer to the Maintenance section of this guide. If the problem is not resolved by following the recommended steps, please contact DuraLabel by calling **800-788-5572** or visiting ***DuraLabel.com***.



# 3

## GETTING TO KNOW YOUR KODIAK MAX

Kodiak Max is a thermal transfer printer, which utilizes heat to transfer a solid resin (ink) from a printing ribbon onto a print substrate (e.g. vinyl tape) creating an extremely durable print. With two separate print heads and two separate ribbon cartridges, Kodiak Max can print in two colors in a single pass.

Kodiak Max is also a complete, standalone printing system, with its own built-in software and controls. If you would like to use other software for label design, you can use Kodiak Max as a desktop label printer by connecting it to your computer directly with a USB cable, or by connecting it to your local network.



*\*Items stowed inside printer's lid*



FRONT VIEW:

**USB Ports:**  
Connect USB drives or other peripherals



**Adjustable Touchscreen:**  
Move screen up to 90 degrees

**Automatic Cutter:** Finished labels will come out here

BACK VIEW:



**Additional USB Ports** (behind removable panel) for wireless keyboard receiver and Wi-Fi USB Adapter (pre-installed)

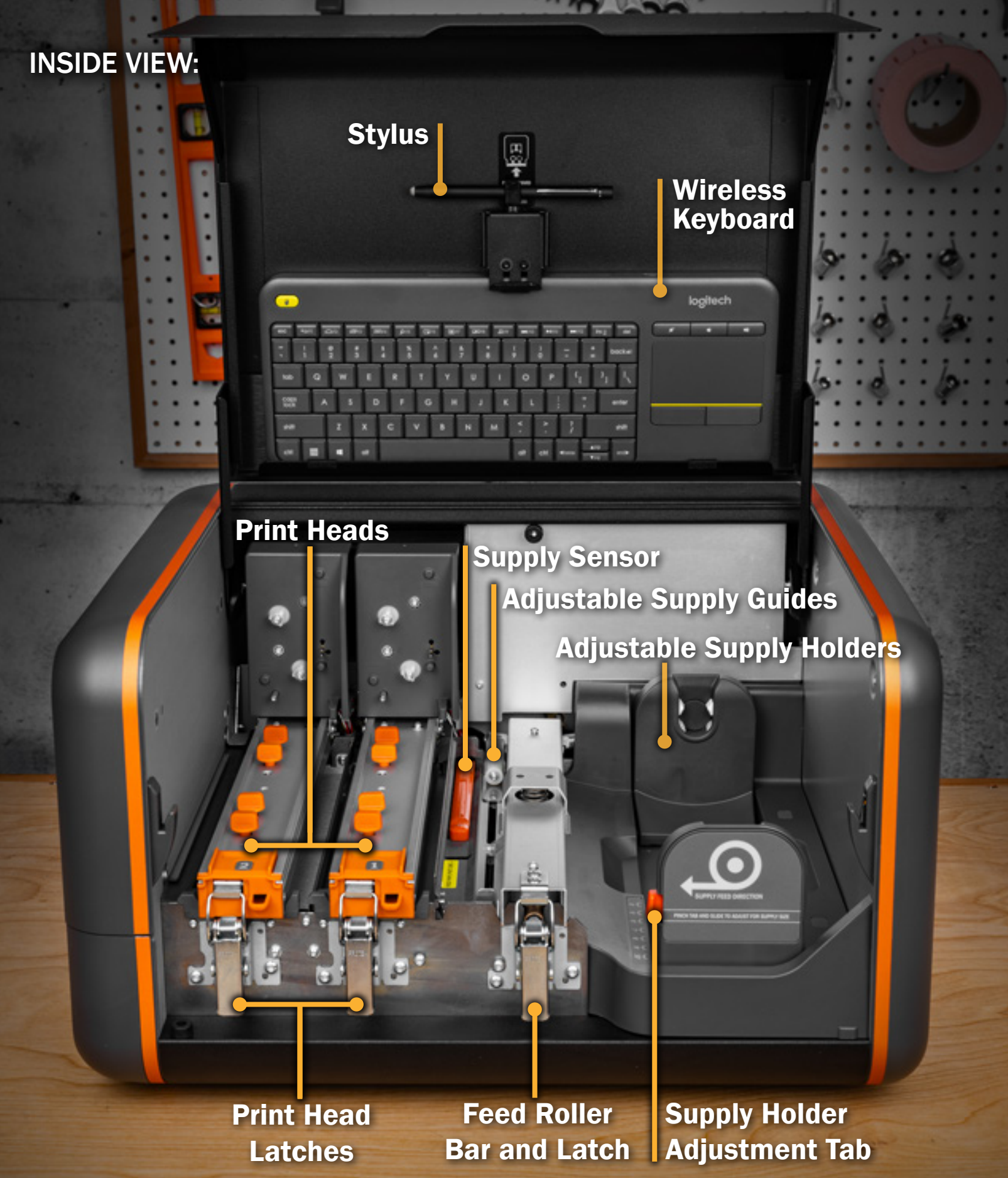
**Power Socket**

**USB-B Port**

**Ethernet Port**

**Power Switch**

INSIDE VIEW:



**Stylus**

**Wireless Keyboard**

**Print Heads**

**Supply Sensor**

**Adjustable Supply Guides**

**Adjustable Supply Holders**

**Print Head Latches**

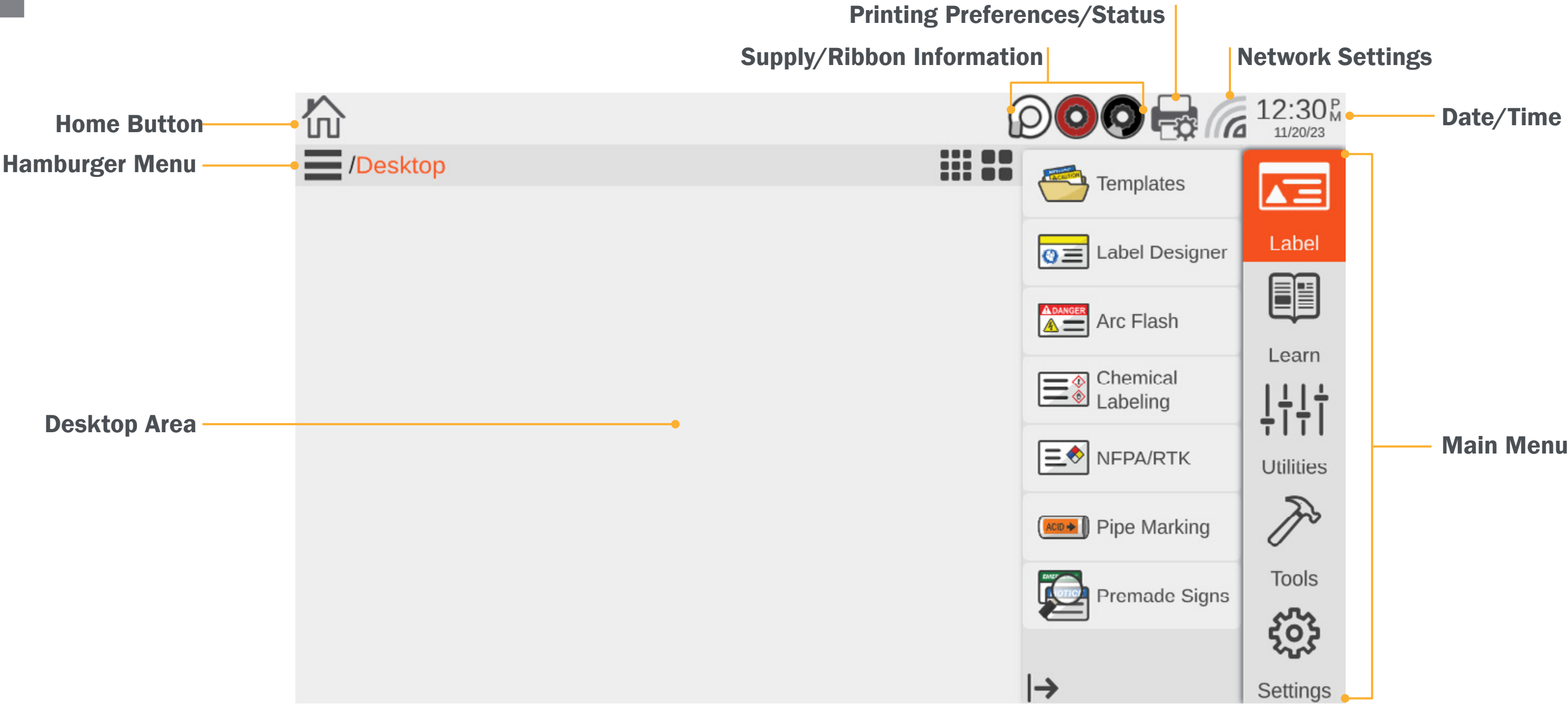
**Feed Roller Bar and Latch**

**Supply Holder Adjustment Tab**

# 4

## KODIAK MAX HOME SCREEN

The Kodiak Max home screen will appear when you start the system, and you can return to it by clicking the Home button. The main menu on the right of the screen lists the general options that are available: Label, Learn, Utilities, Tools, and Settings.





## LABEL

This menu includes options for creating or using premade designs for printing labels and signs. For more information on how to use the label design software on your Kodiak Max, see the LabelForge PRO User Guide. The same software is also available for installation on a PC.



**Templates:** Browse existing templates for signs or labels on your Kodiak Max.



**Label Designer:** Design new signs or labels from scratch, or modify existing designs.



**Arc Flash:** Enter data for specialized electrical safety signage, and print labels that comply with the NFPA 70E and CSA Z462 standards.



**Chemical Labeling:** Create GHS-style chemical labels for safety and compliance, using an editable database of chemical details. Labels can follow HazCom 2012 (United States) or international GHS (UN) formats.



**NFPA/RTK:** Create supplemental chemical labels with the NFPA 704 hazard ratings, using an editable database of chemical details.



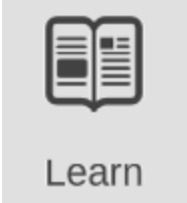
**Pipe Marking:** Quickly design pipe labels to match ANSI/ASME A13.1 or the IIAR Bulletin No. 114 standards.



**Premade Signs:** Readily access hundreds of predefined labels, categorized by application, which can be used as is or swiftly modified to meet specific needs.

## LEARN

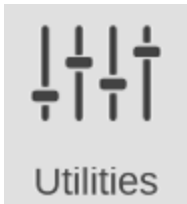
This menu includes ways for you to learn about major topics or find the answers to your questions. The options here are:



**Manuals:** Documentation for your Kodiak Max and its associated software.

## UTILITIES

This menu is for maintaining and updating your Kodiak Max system.



**Database Manager:** Create, copy, import, or export databases for use with the labeling modules.



**Font Installer:** Add a standard .ttf font file to your list of available fonts.



**Supply Status:** Provides Ribbon and Supply information regarding the supplies currently installed in the printer. As well as providing the current status of the printer.



**Updater:** View the current software version and easily check for an available update (if your Kodiak Max is connected to the Internet). Updates can also be installed from a USB storage device.



**Users and Passwords:** By default, Kodiak Max does not require a login. This utility lets you add designated users, and require a password for accessing the printer's standalone features.

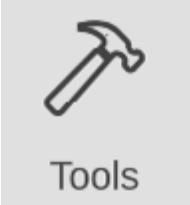


**Symbol Creator:** Convert common image types (such as .jpg or .tif) to the format used by the Symbols Library in the Label Designer module.



## TOOLS

This menu offers direct access to specific applications on your Kodiak Max.



**Calculator:** Perform basic math functions.



**Character Map:** Browse and copy special characters for use in your labels and signs.



**Graphic Viewer:** View image files (such as .jpg or .svg) on your Kodiak Max.



**PDF Viewer:** Read documents in the standard .pdf formats



**Spreadsheet Viewer:** View and make basic edits to simple spreadsheet files.



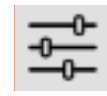
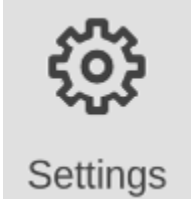
**Text Editor:** Read or write plain text files in the .txt format.



**Video Player:** Play video files in .ogv format.

## SETTINGS

This menu is for your Kodiak Max system settings.



**General:** Allows the user to change the unit of measure (inches or mm), display settings, and privacy settings.



**Printer:** Modify the printer's default settings affecting how the label or sign is printed.



**Date & Time:** Adjust Kodiak Max's internal clock and calendar. You can also access these settings by clicking on the time or date displayed in the main toolbar, at the top of the screen.



**Networking:** View or change Kodiak Max's network settings for a wireless or Ethernet connection. You can also access these settings by clicking the network icon in the main toolbar, at the top of the screen.



**Updates:** View the software version currently installed on your Kodiak Max, and easily check for updates, when connected to the Internet and install updates via Wi-Fi or USB drive.



**Languages:** Choose to interface with the Kodiak Max in 14 different languages.



**Users:** Designate users, and require a password prior to using Kodiak Max.



**About:** Provides information regarding the system (Serial Number, FCC ID, Version, Available Storage, and more.)

# 5

## LOADING SUPPLY

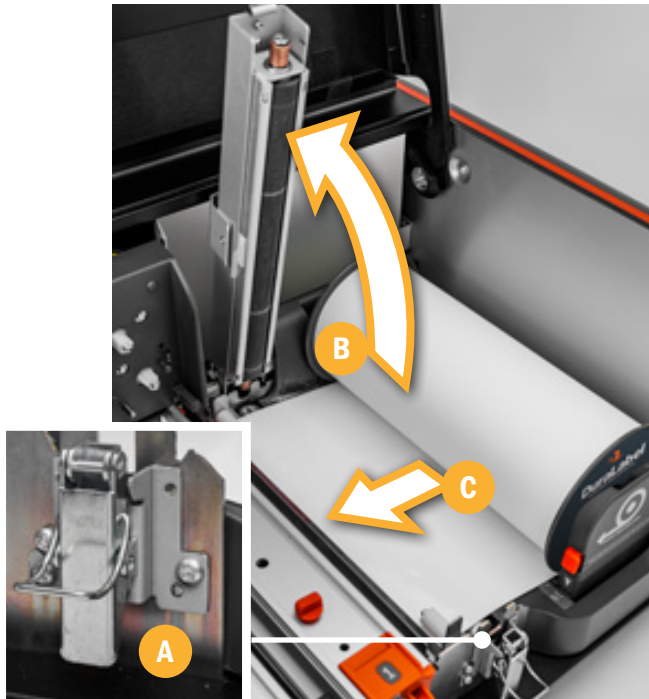
To load your Kodiak Max with supply, fully raise the printer's lid. The supply is the base material for your labels or signs, serving as the "paper" for the printing process. Supply is available in a variety of materials, types, sizes, and colors. All Kodiak Max supply is sold as a roll with geared plastic end caps. Do not remove these end caps, or the supply will not fit properly in your Kodiak Max. When loading supply, make sure that it is not folded, and lies flat and smooth. This will prevent supply jams during printing. To load supply, follow these steps:



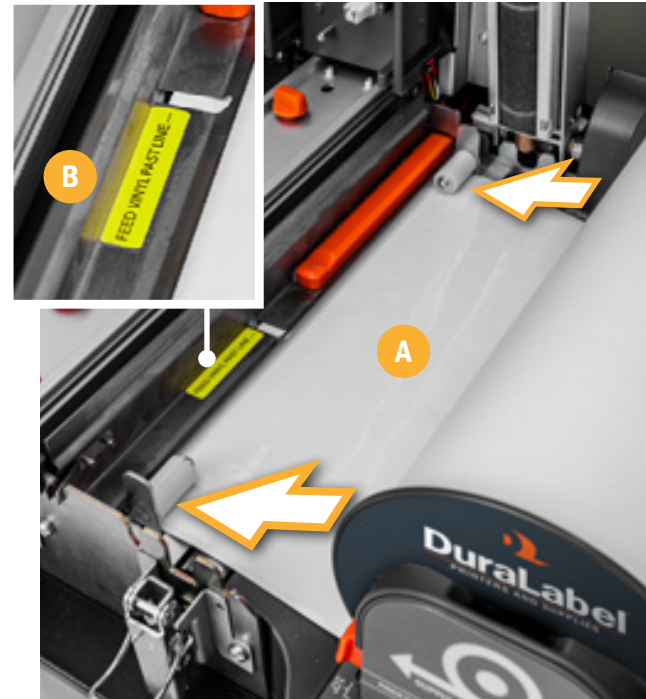
1. Squeeze the orange tab on the front adjustable supply holder, and slide the holder to the position marked for your supply width.  
*(The adjustable supply holders are paired to move together and keep your supply centered properly)*



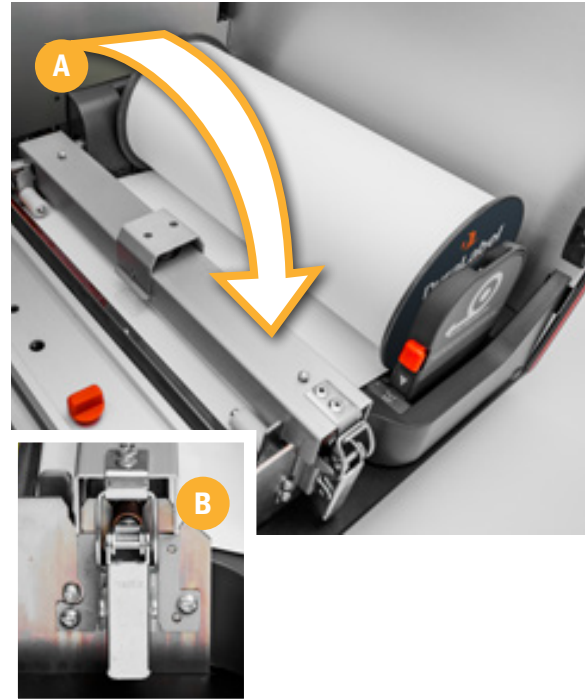
2. Hold the roll of supply so that the end cap with the DuraLabel label faces the open side of the printer. Then, rest the gears on the supply's end caps into the slots on the supply holders.



3. Unlatch the feed roller bar (A) and allow it to raise (B). Pull the end of your supply away from the roll, and over the top of the feed roller (C). Check that the leading edge of your supply is clean, straight, and smooth. *(if not, use scissors to cut it into a straight line)*



4. Slide the adjustable supply guides together ensuring the label stock remains between the two guides and under the white rollers (A). Continue to feed the label stock under the metal guide, passed the line marked on the yellow label (B).



5. Lower the feed roller (A) bar and latch it closed (B).  
  
When you finish loading supplies and close the printer's lid, Kodiak Max will automatically detect which type of supply has been loaded.



# 6

## INSTALLING A RIBBON CARTRIDGE

To load your Kodiak Max with ribbon cartridge, you will need to fully raise the hinged lid. Ribbon cartridges are installed into Kodiak Max by sliding them into place over the print heads. There are two print heads, marked with the numbers “1” and “2.” Each print head needs a ribbon cartridge installed properly in order for Kodiak Max to print.



**NOTE:** When printing with a signs or label with a single color, you will need to install one ribbon cartridge in print head 2 and the blank ribbon cartridge, which is marked with an orange label, in print head 1.

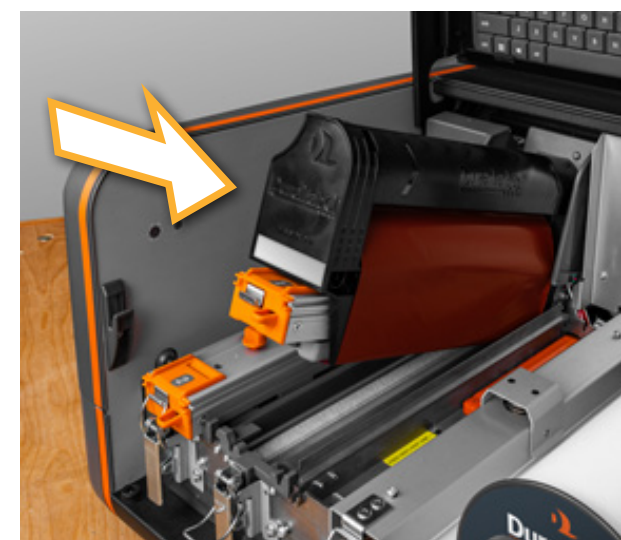
To install the ribbon cartridge into your printer, follow these steps:



1. Unlatch the print head and raise it by lifting the orange tab.



2. Holding the ribbon cartridge on the DuraLabel logo side (words facing up) slide the cartridge onto the print head. The loose section of ribbon should fit just below the print head, and the cartridge should slide smoothly on its rails.



3. Gently push the cartridge all the way back (number on the print head is visible). You may hear the cartridge click into position.



4. Lower the print head by lifting up on the orange tab, then gently lower print head down and latch it closed. Close the printer's lid. Kodiak Max will automatically detect which type of ribbon has been loaded.



**Load black ribbon in Print Head 2** when using with any other ribbon color for the best possible print quality, and to allow overprinting.



**Load white ribbon in Print Head 1** when using with any other ribbon color for the best possible print quality, and white base printing.



When using **only one ribbon cartridge** load blank ribbon cartridge in **Print Head 1**.



# 7

## NETWORK SETTINGS

To connect your Kodiak Max to a network, click the **Network Settings icon** on the main toolbar. This utility shows the current network state, and a list of any available Wi-Fi networks.

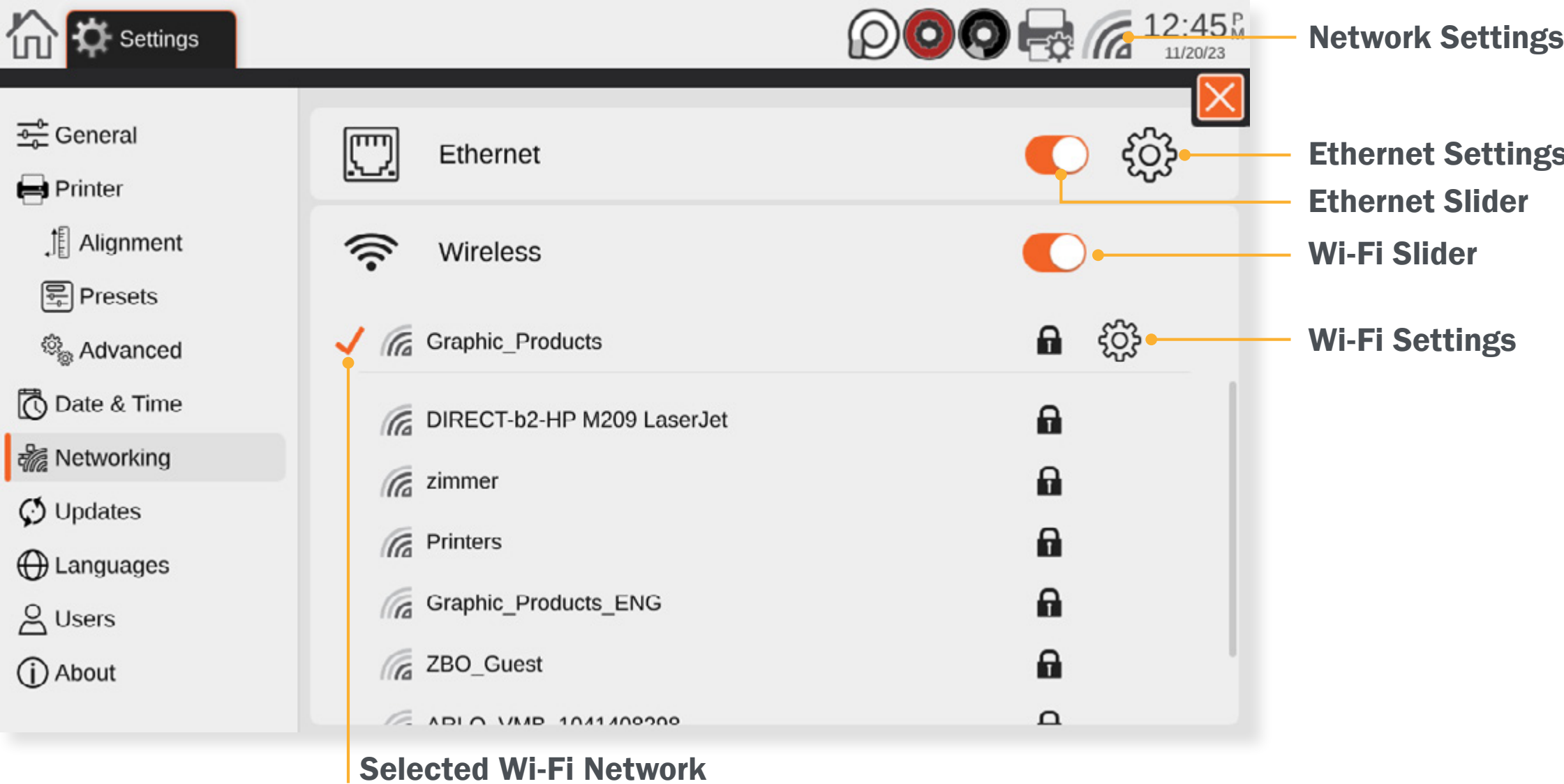
To connect to a **Wi-Fi network**, select the desired network from the list, and click **Connect**. If a password is required, you will be prompted to enter it.

To connect to a **Ethernet (wired) network**, make sure that your Kodiak Max is physically connected to the network using a standard Ethernet cable.

### ETHERNET SETUP

The IP address on the printer will need to be set. This can be done onboard the Kodiak Max by first pressing the Home icon, then navigating to **Settings > Networking >** then select the gear icon next to the slider for Ethernet.

Next, set the option for Automatic to on (moving the slider to the right, shown as an orange slider) to automatically detect the network, or to off (moving the slider to the left, displayed as a gray slider) to manually input the network information. Once the information for the network has been inputted press Save, then turn the printer off for at least 10 seconds prior to powering back on.



Once the printers boots back up, navigate to the Ethernet settings menu. This menu will display the IP address as well as Gateway and Netmask for the connected network. This step is not needed when manually entering the network's information.





# 8

## CONNECTING KODIAK TO A PC (OPTIONAL)

In addition to its standalone capabilities, Kodiak Max can receive print jobs from a PC. Your printer comes with a PC version of the LabelForge PRO label design software, as well as a Windows printer driver.

### CONNECTING THE PRINTER VIA USB

When connecting your Kodiak Max to a PC for the first time, follow these steps:

1. Make sure Kodiak Max is connected to a power source and turn the printer on.
2. Next, connect a USB cable from the Kodiak Max's USB-B port (back of printer) to a USB-A port on your PC.
3. Run the Kodiak Max driver installation program, included on the USB flash drive that came with your printer.  
*You may need IT administrator privileges to continue, and will be prompted to restart your computer to complete the installation process.*
4. Run the LabelForge PRO installation program, also included on the USB flash drive.  
*You may need IT administrator privileges to continue.*



### PC DRIVER SETTINGS

After initial setup, your Kodiak Max will appear in the list of available printers on your computer. Be sure to select the appropriate printer when you want to print labels or other documents.

You can change some of the settings for your Kodiak Max through **Printing Preferences**.

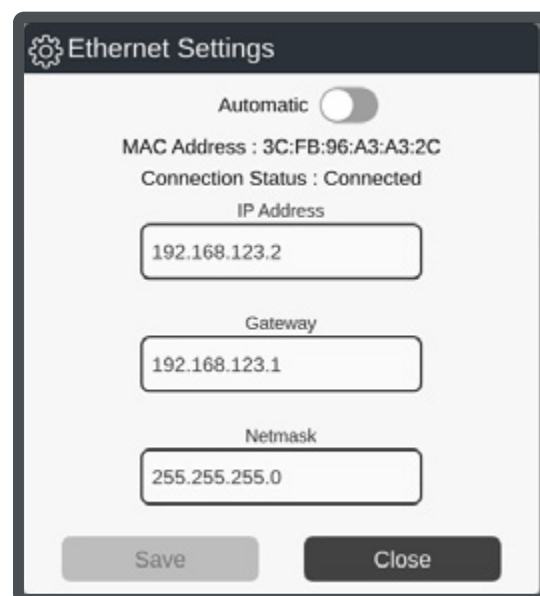


If you need help, please contact your DuraLabel representative for support - 1-800-788-5578

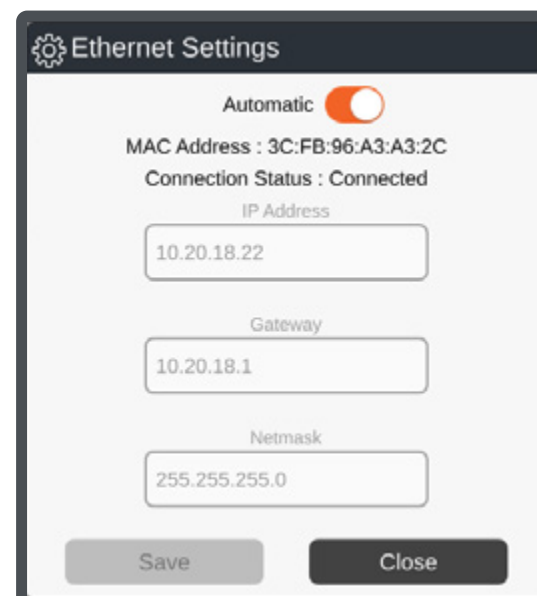


## CONNECTING THE PRINTER VIA ETHERNET

1. Connect your printer via Ethernet cable in the back.
2. Navigate to Settings → Networking (Networking can also be accessed via clicking the Wi-Fi signal icon in the taskbar).
3. Disable your Wireless connection by clicking the pill switch (Orange color indicates on, Grey indicates off).
4. Enable your Ethernet connection if not already enabled.
5. Click the gear icon to configure your machines Ethernet settings, you should now be presented with the following window:
6. Make note of your current Connection Status. If you're connected and have an IP Address, you can skip this section and move onto setting up windows.
7. The preferred methodology is to enable Automatic, but typing out your IP, Gateway, Netmask will work as well if you know them.
8. Enable Automatic and click Save. This can take up to 30 seconds to Connect. If you have any problems consult with your IT Department to set up the networking.
9. Once your status says Connected and you have an IP Address, write down or make note of the IP Address somewhere. We'll be using this IP Address in later steps.



The screenshot shows the 'Ethernet Settings' window. At the top, there's a gear icon and the title 'Ethernet Settings'. Below it, an 'Automatic' toggle switch is turned off (grey). The 'MAC Address' is '3C:FB:96:A3:A3:2C' and the 'Connection Status' is 'Connected'. There are three input fields: 'IP Address' with '192.168.123.2', 'Gateway' with '192.168.123.1', and 'Netmask' with '255.255.255.0'. At the bottom are 'Save' and 'Close' buttons.



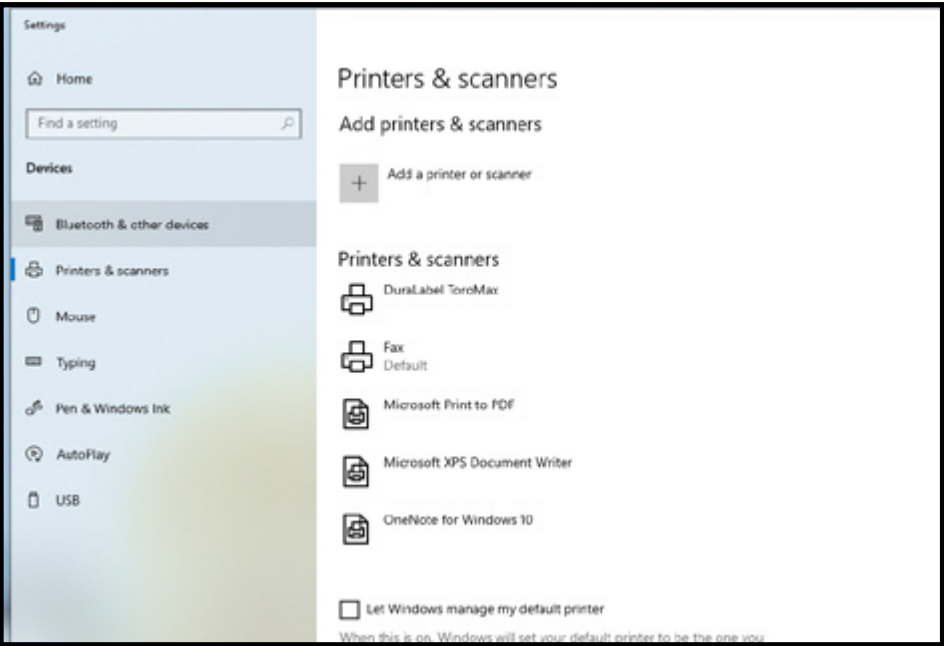
The screenshot shows the 'Ethernet Settings' window. At the top, there's a gear icon and the title 'Ethernet Settings'. Below it, an 'Automatic' toggle switch is turned on (orange). The 'MAC Address' is '3C:FB:96:A3:A3:2C' and the 'Connection Status' is 'Connected'. There are three input fields: 'IP Address' with '10.20.18.22', 'Gateway' with '10.20.18.1', and 'Netmask' with '255.255.255.0'. At the bottom are 'Save' and 'Close' buttons.



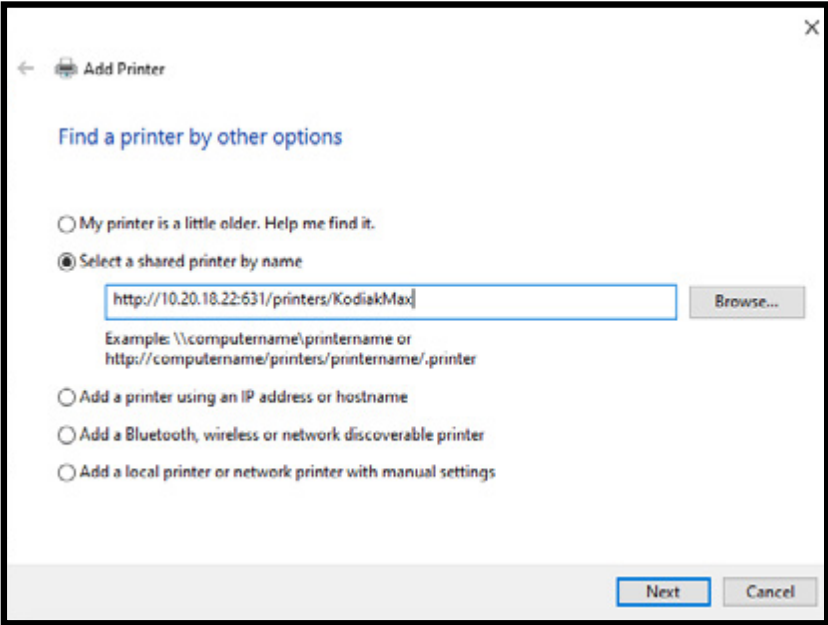
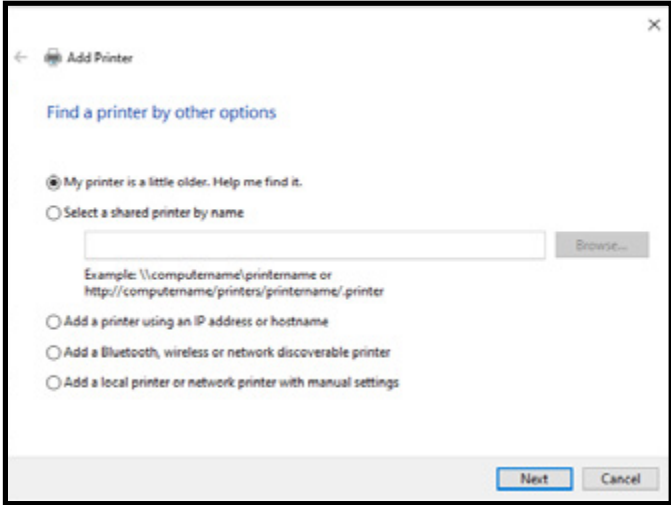


Installing Ethernet Max driver in Windows for IPP (Internet Printing Protocol)

- 1. Confirm with your IT department that you have IPP enabled (This may be disabled due to IT policies).  
*If you are unsure or your IT department doesn't allow IPP, follow the steps outlined in 'Installing Ethernet Max driver in Windows for TCP/IP'*
- 2. Download the latest driver for your max printer from <https://duralabel.com/support/printer-support/>
- 3. Install the driver via double clicking the installer. Navigate through the setup wizard, recommended settings will be already selected.
- 4. Once the driver install completes, it will prompt to restart. Make sure you restart before continuing to the next step.
- 5. Now that you've restarted, navigate to Printers & Scanners in Windows.

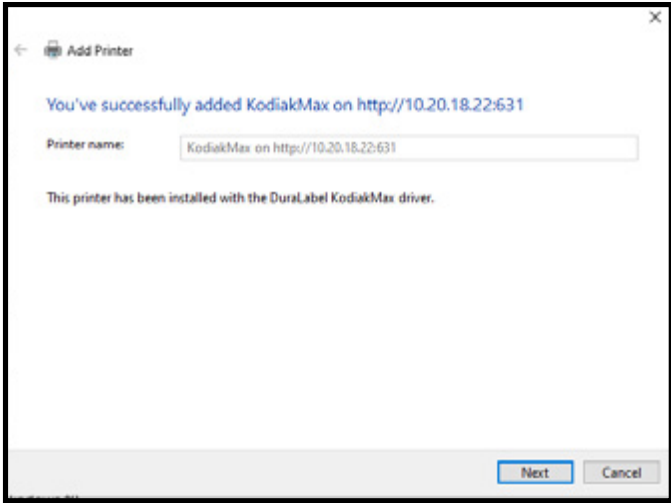


- 6. Click the Add a printer or scanner at the top, and wait until the following message comes up: "The printer that I want isn't listed"
- 7. Click the "The printer that I want isn't listed" message.
- 8. Select the radio button "Select a shared printer by name."
- 9. Type into this field and replace IPADDRESS with the IP your machine has assigned to it (done in the previous section setting up printers Ethernet connection).
  - *http://IPADDRESS:631/printers/KodiakMax*

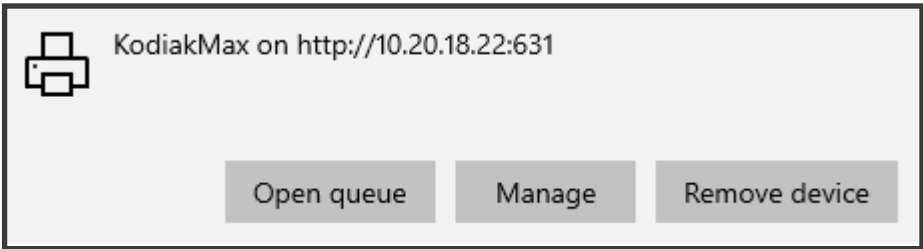


- 10. Once you've got the field populated with the correct information. Click "Next".
  - This can take up to 2 minutes, while we wait for windows to communicate with the printer.
  - If this fails, confirm your Ethernet settings on the printer and confirm the URL you typed in on the previous step.
  - If it continues to fail move onto Installing Ethernet for TCP/IP section.

- 11. The printer should add successfully and present you with the following:



- 12. Click Next, then Finish.
- 13. The printer should now show up under Printers and Scanners

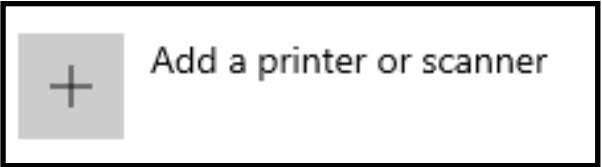


- 14. The printer can now be used with LabelForge PRO.  
*Supply information won't be communicated to windows when setting it up as an Ethernet printer.*

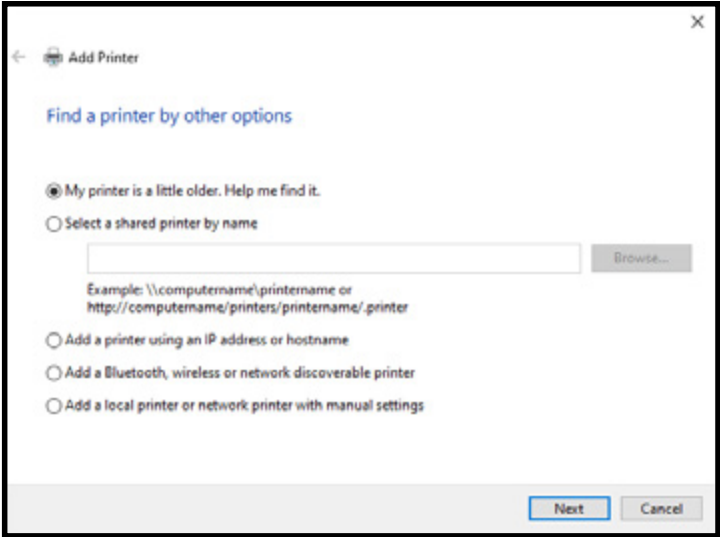


Installing Ethernet Max driver in Windows for TCP/IP (Transmission Control Protocol/Internet Protocol)

- 1. Download the latest driver for your max printer from <https://duralabel.com/support/printer-support/>
- 2. Install the driver via double clicking the installer.
  - Navigate through the setup wizard, recommended settings will be already selected.
- 3. Once the driver install completes, it will prompt to restart. Make sure you restart before continuing to the next step.
- 4. Now that you’ve restarted, navigate to Printers & Scanners in Windows.
- 5. Click the Add a printer or scanner at the top and wait until the following message comes up: “The printer that I want isn’t listed.”

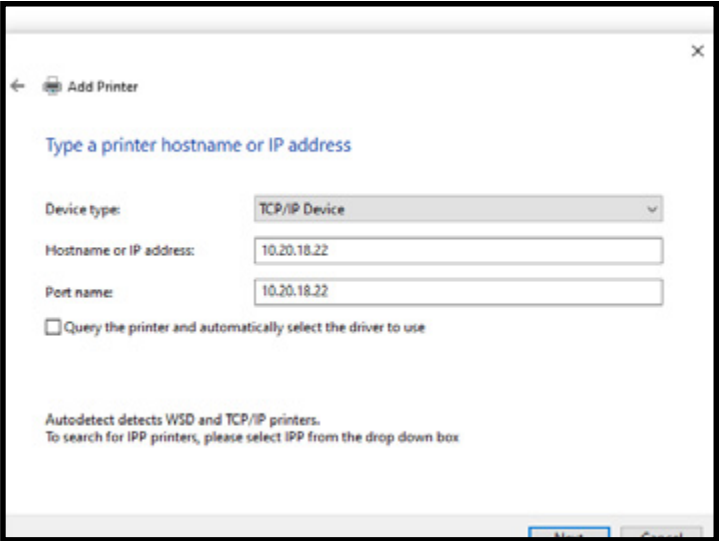


- 6. Click the “The printer that I want isn’t listed” message.
- 7. Select the radio button “Add a printer using an IP address or hostname.” Click Next

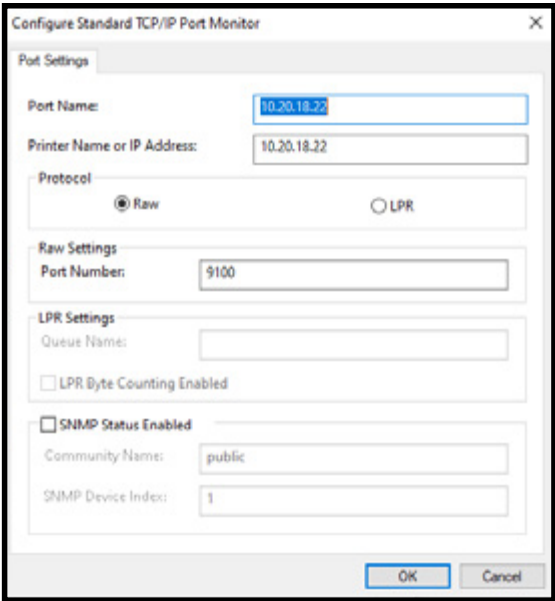


- 8. From the Device type, select TCP/IP Device.
- 9. Type in the IP address assigned to your printer (done in the previous section setting up printers Ethernet connection), into the Hostname field.
- 10. Click Next

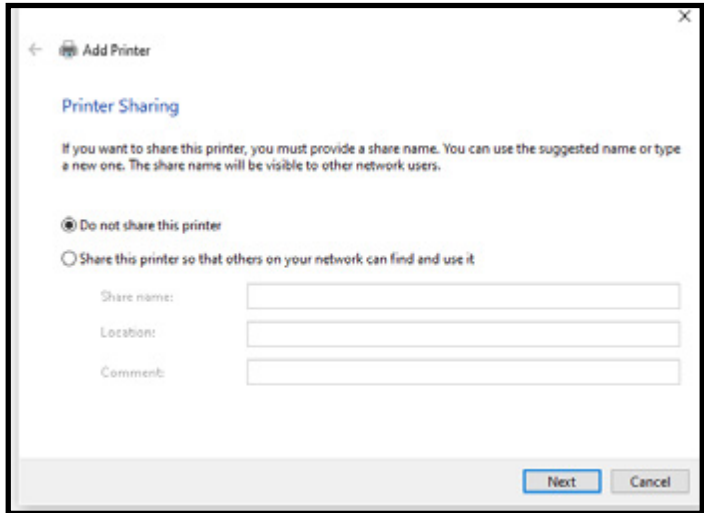
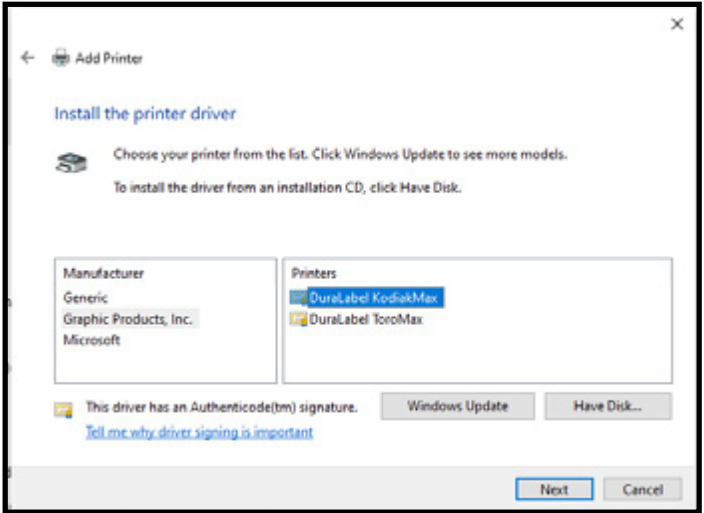
The port name field will also match this IP address.



- 11. Select Custom Radio button → and Click Settings button.
- 12. Set both Port Name and Printer Name to the IP address for your printer.
- 13. Click OK → Click next. You should now be presented with a window to select the driver.



- 14. Select Graphic Products Inc. under Manufacturer and your Max printer under Printers. Click Next
- 15. You’ll now be presented with the option to give the printer a name. We recommend leaving this as the default. Click Next.
- 16. Determine if you’ll be sharing the printer (Default is already set to Do not share this printer)
- 17. Click Next → Finish. The printer should now show up under Printers and Scanners. The printer can now be used with LabelForge PRO. Supply information won’t be communicated to windows when setting it up as an Ethernet printer.





# 9

## PRINTER PREFERENCES

These are the detailed controls for how your Kodiak Max will handle print jobs. When you load supplies, Kodiak Max will automatically adjust many of its settings to match those supplies, so you may only need to change these settings for unusual tasks.

The same overall settings are available whether they are accessed from the built-in interface, or from the driver software on a PC.

Select the printer icon then by clicking the icon shown as a gear within the Print Settings menu.

This window has five tabs, with different options:

**BASIC SETUP**

Choose the most common options, like landscape/portrait print orientation, cut options, or special effects like mirroring (flipping the design backward) or negative printing (switching the colors of the design). You can also choose a “preset” for all settings.

**SPEED/HEAT**

If needed for troubleshooting, adjust the overall printing speed, and the individual heat adjustment for each print head.

**COLOR**

If needed for troubleshooting or print quality, adjust the way Kodiak Max handles multi-color printing, shades of color, and overprinting (black/color) or base printing (white/color).

**ALIGNMENT**

If needed for troubleshooting, adjust the printing offsets (horizontal and vertical) for each print head.

**CUT/MEDIA**

If needed for troubleshooting, manually select the Media Type and the feed or cut offsets.

## PROGRAM VS. GLOBAL SETTINGS

If you access these controls through a program’s individual options, the window title will be shown as Printing Preferences, and any changes will only affect print jobs for that session of labeling.

In order to change the setting globally (modifying the default settings on the printer) access the Printer Settings menu by clicking on the printer icon within the Kodiak Max’s toolbar or by accessing the Supply Status menu and selecting Printer Settings. The data which can be modified to change the print behavior are the sections titled Printer, Alignment, Presets, and Advanced.

## PRINTING OFFSETS

The printing offsets are available on the Alignment tab in the Printing Preferences menu or within Alignment in the Printer Settings menu. **This should only be used when there is a serious misalignment.** Ordinary printing will have a tolerance of up to 1/32 inch (under 1 mm) horizontally, and up to 1/16 inch (under 2 mm) vertically. If your Kodiak Max seems to be farther out of alignment, please contact DuraLabel Support by calling 800-788-5572 or visiting *DuraLabel.com*.



## PRINTING PREFERENCES ON PC

When accessing the Printing Preferences for your Kodiak Max from a PC, the orientation setting (landscape/portrait) will be the only option immediately available. Additional options for unusual needs, or for troubleshooting, can be accessed by clicking the “Advanced...” button. Within the DuraLabel Kodiak Max Advanced Options menu the following features can be modified.

- CUTTER**  
Cut after each label printed, after a complete job, or not at all.
- 180 DEGREES ROTATION**  
Choose whether your Kodiak Max rotates all print jobs by 180 degrees for troubleshooting.
- NEGATIVE**  
Invert the colors of the design, from “printed” (ribbon color) to “not-printed” (label stock color) and vice versa. This effect only uses the label stock and the ribbon loaded in print head 1. Multi-color designs will be reduced to single-color with this effect.
- MIRROR**  
Flip the design backward.
- RIBBON USED**  
For troubleshooting, manually control which ribbon and print head will be used.

- RIBBON & SUPPLY COLORS**  
when printing from third-party software, such as common word processors, manually select the loaded supplies to ensure the best print results.
- OVERPRINT AND WHITE BASE PRINT**  
When using black ribbon and another color, or white ribbon and another color, these options may be helpful for troubleshooting poor print quality.
- COLOR MATCHING**  
Choose whether to use Best color matching (Kodiak Max uses the closest available match for any unavailable colors in your design) or Strict color matching (Kodiak Max will only print the colors that it can match exactly).
- DITHERING**  
Choose how Kodiak Max uses patterns of dots to approximate shades of color.

- COLOR HEAT INTENSITY OFFSETS**  
For troubleshooting, adjust the heat used in the printing process.
- LABEL STOCK FORMAT OPTIONS**  
For troubleshooting, adjust Kodiak Max supply settings.
- STOP POSITIONS & HORZ/VERT OFFSETS**  
For troubleshooting, adjust Kodiak Max printing offsets.

**NEGATIVE PRINTING**

Negative printing is an effect available on the Basic Setup tab within the Printing Preferences menu or under Printer when in the Printer Setting menu. It only uses the label stock and the ribbon loaded in print head 1. Multi-color designs will be reduced to single-color with this effect.



# 10

## SYSTEM UTILITIES

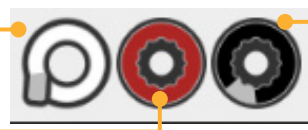
These utilities are used for advanced functions or system troubleshooting, and can be found in the Utilities menu

### SUPPLY STATUS

This utility shows the currently loaded supplies, and how much of each is remaining. Click the supply rolls on Kodiak Max main toolbar to open this utility.

To print, Kodiak Max requires a label stock and two ribbon cartridges to be properly installed. Opening this utility provides the supplies which are present and how much of each is remaining. The catalog number for each loaded supply is also shown.

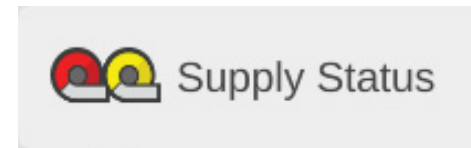
Label Stock



Ribbon Supply #2

Ribbon Supply #1

If you need to trim the edge of your label stock (after clearing a jam, for example) this utility also offers a “Trim” function, which will eject a short, blank label, and cut it cleanly. The window also includes an option to cancel any current print jobs, or check your printer settings.

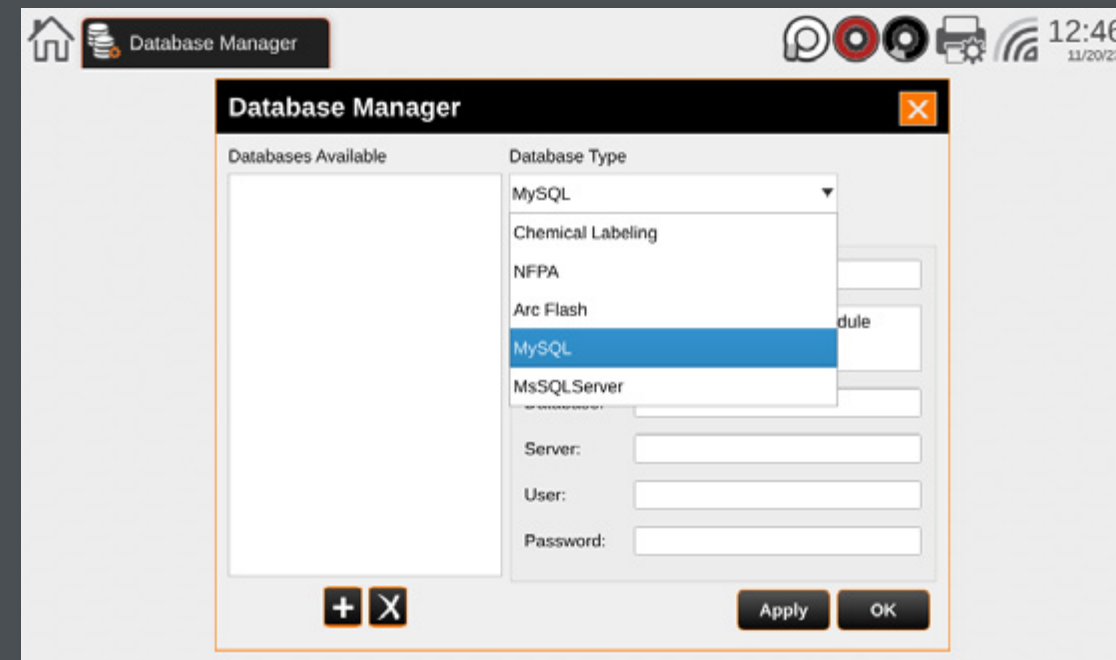


### DATABASE MANAGER

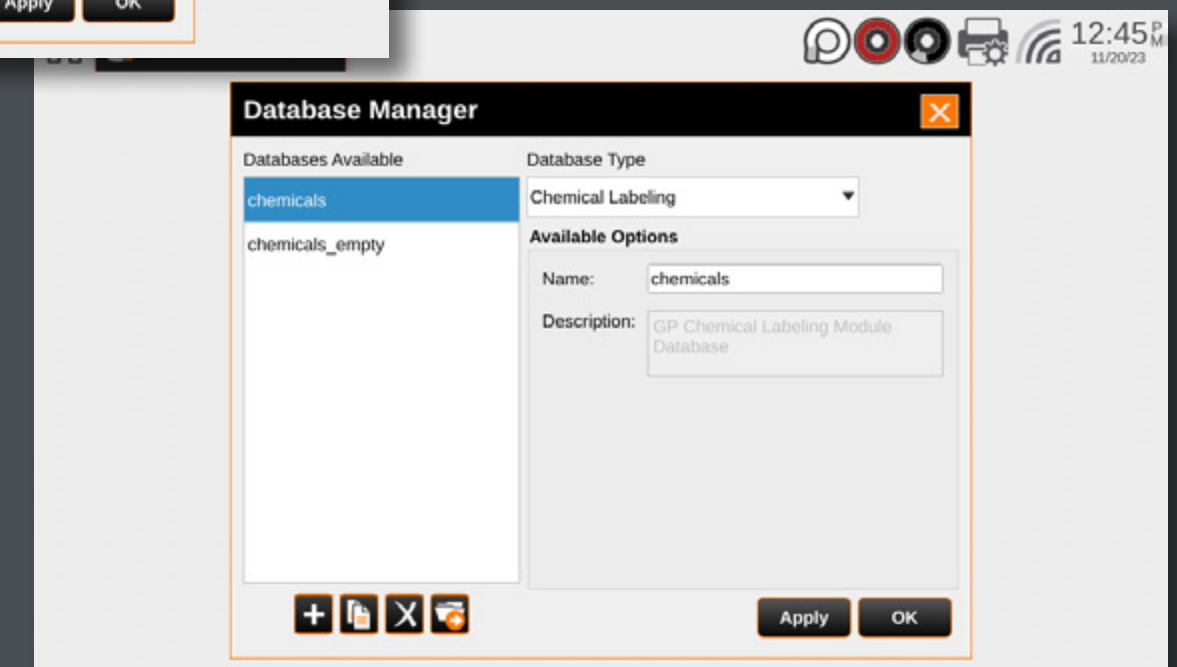
Several of the labeling modules in your Kodiak Max use internal databases to store and retrieve data for label printing. With the Database Manager utility, you can create a new database, import or export databases, or set up a network connection for using an external database with Open Database Connectivity (ODBC).



Start by selecting the database type with the dropdown menu. To create a new database, enter a name for the new database and press the Add Database button.



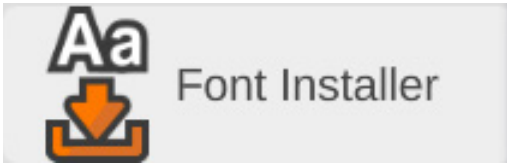
To adjust, import, export, or copy an existing database or connection, select the existing database from the list, and use the buttons below the list or the editable fields to the right to fill in the appropriate information.



FONT INSTALLER

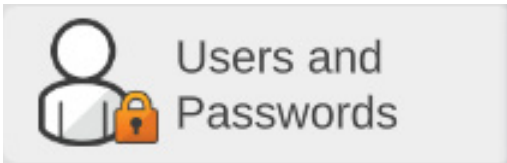
In the event you desire to use different font(s) than what comes resident on the Kodiak

Max you can use this feature to upload them onto your printer. Using a USB Flash Drive, with the fonts already installed, plug it into the printer. Open the Font Installer, select “Open” and select the file path and the font in question and click “Open”. Follow the on-screen prompts for installation.



USERS AND PASSWORDS

By default, Kodiak will not be locked; any person can use the system. To require a password, use the Users and Passwords utility to add an authorized user. Each individual user will have their own password, and there is no limit to the number of users that may be added.

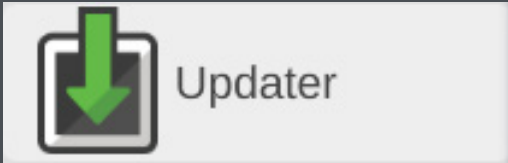


Once an authorized user has been added, you can click the Lock button in this utility to enforce a user name and password to unlock the system. Any authorized user can also add or remove other users in this utility.

If your Kodiak Max has been locked, but all user passwords have been lost or forgotten, contact support at 800-788-5572 or at *DuraLabel.com*.

UPDATER

The Updater utility shows the currently installed software on your Kodiak Max.



If an Internet connection is available, the utility will check if any updates are available and give you the option to download and install them.

If you have a USB flash drive, or other USB-connected storage device, with the software update files you can install them using the Updater. To do so, within the “Updater” menu press “USB”, this will open a new window titled “Select a USB drive path”. Within this window, select the USB storage device from the “Favorites” section, then on the right side of the selection plane choose the folder titled “DLKUPDATE”, from here open the folder titled “Update”, then press “Select”. The printer will automatically go through the installation process. Once complete turn the printer off for at least 10 seconds prior to powering it back on to complete the installation process.

Additional DuraLabel software may be added in the future. However, no user defined software may be installed directly on the Kodiak Max.





# 11

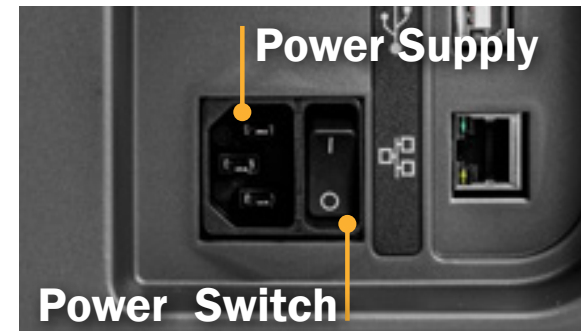
## CLEANING KODIAK MAX

Periodic cleaning will help prevent jams, and keep your Kodiak Max running smoothly. If specks, spots, or streaks appear in your printed labels, clean the inside of the printer. If printed labels stick in the cutter opening or do not fall out on their own, clean the cutter.

### CLEANING INSIDE KODIAK MAX

To clean the inside of your Kodiak Max, lift lid to its fully raised position.

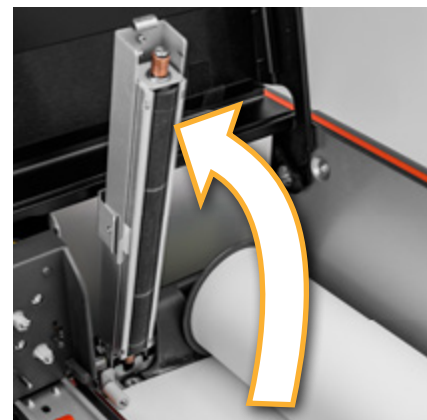
1. Power the printer down by switching the power switch to the off position, then disconnect the power supply directly from the wall outlet or from the back of the printer. This must be done whenever cleaning Kodiak Max.



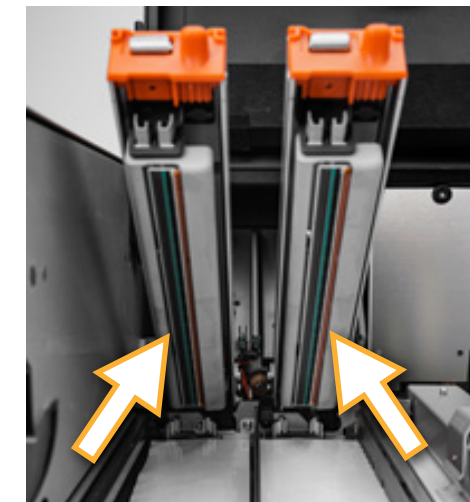
2. Unlatch the two print heads, and lift them by their orange tabs until they hold in their fully raised positions. Slide the ribbon cartridges out of place, and set them aside (Place the cartridges upside-down to avoid accumulation of contaminants).



3. Unlatch the spring-loaded feed roller bar, and let it rise out of the way. Turn your roll of label stock by hand to rewind any supply that is fed through the printer.



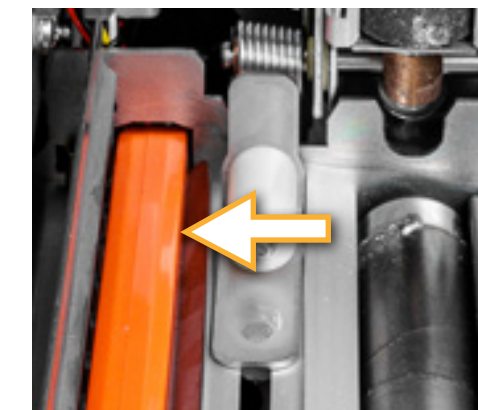
4. Using a pre-moistened cleaning swab or a soft cloth with some isopropyl alcohol, wipe the underside of each print head, paying attention to the black area, located the left of the green strip, and the shiny metal feeding guide.



5. On the bottom side of the printer, where the print heads make contact, wipe the rubber rollers manually advance the rubber rollers (by hand), to clean the entire circumference of the rollers. Then wipe the rubber roller in the raised feed roller bar.



6. Check the adjustable supply guides for any adhesive build-up, especially under the small white rollers, and clean them as well.



## CLEANING THE CUTTER

The best way to reach the cutter for cleaning is from the front of the printer. When cleaning the cutter, be sure that your Kodiak Max is powered off and disconnected from any power source, see step one on the previous page - Cleaning inside Kodiak Max.

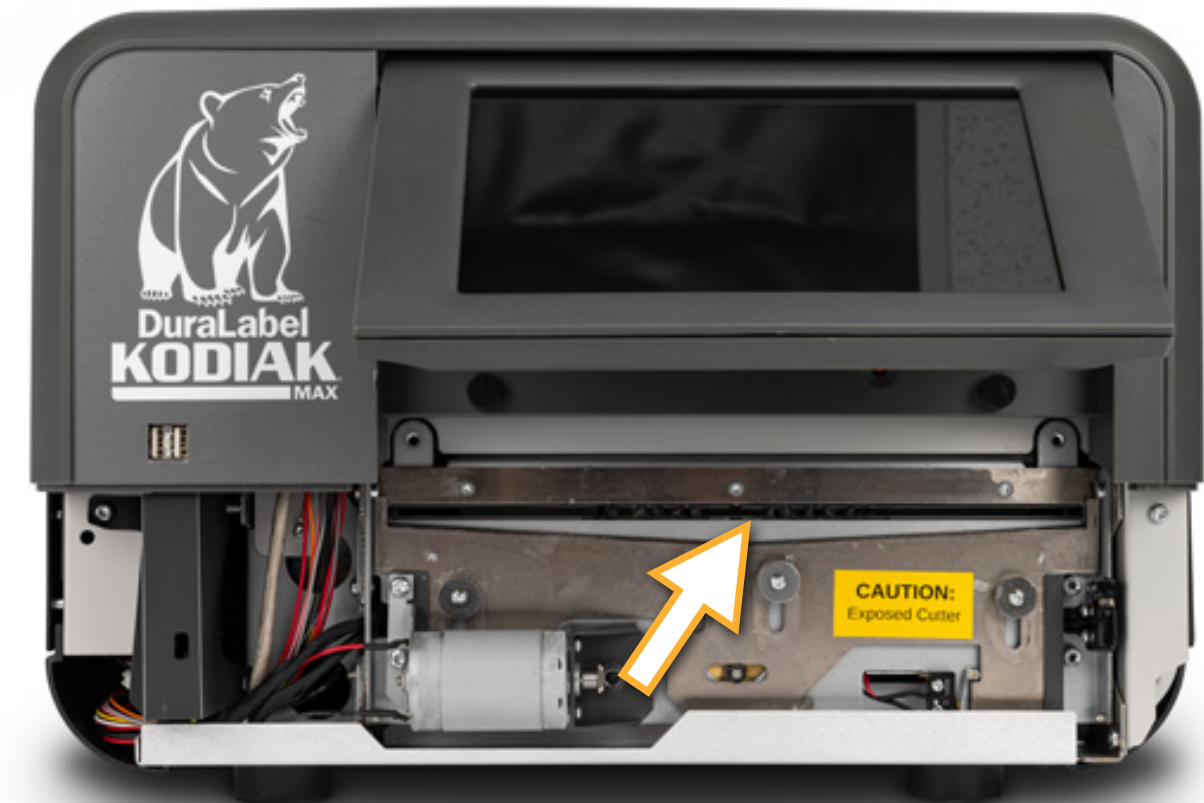
1. Raise the touchscreen to its highest position. Locate two Philips screws behind the screen, just above each end of the cutter slot. Remove the two screws, and set aside.
2. Slide the cutter faceplate down to release and remove it. This will expose the cutter blades.



**BE CAREFUL:** while the faceplate is removed, the cutter motor will not engage, but the blade is still sharp.

3. Using a pre-moistened cleaning swab or a soft cloth and some isopropyl alcohol, remove any built-up adhesive from the blades.
4. Replace the cutter faceplate by sliding it up into place, and re-inserting the two screws.

After cleaning your Kodiak Max, allow the cleaning agent to evaporate, then load supplies and you'll be ready to print again.





## SPECIFICATIONS

Kodiak Max specifications are subject to change without notice.

### PRINT MECHANISM

- Type: Thermal Transfer
- Print Speed: 2 ips
- Resolution: 300 dpi
- Max. Print Width: 8.4" (213.4mm)
- Max. Print Length: 100" (2,540mm)
- Cutter: Automatic

### INDICATORS & BUTTONS

- Display: 9" Full-color capacitive touchscreen

### COMMUNICATION & DATA STORAGE

- Communication: USB 2.0 (4x USB-A, 1x USB-B), Wi-Fi, & Ethernet
- Data Storage: 4GB Flash (long-term), 2GB SDRAM (short-term)

### POWER REQUIREMENTS

- Power to AC Adapter:  
100-240 VAC, 50-60 Hz, .8A (Max)

### CAPABILITIES

- Create, Edit, Save, and Print label designs with internal and external software
- Lock system with user passwords

### OPERATING ENVIRONMENT

- Operating Temperature: 50°F to 104°F (10°C to 40°C)
- Operation Humidity: 30-85%, non-condensing
- Storage Temperature: -4°F to 140°F (-20°C to 60°C)
- Storage Humidity: 10-90%, non-condensing

### LABEL STOCK

- Types: Continuous, Black Mark, and Die-Cut
- Min. Liner Width: 4"
- Max. Liner Width: 10"
- Gap/Mark Height: 0.12"
- Capacity: Up to 50"

### RIBBON SUPPLY

- Width: 4.17" to 8.66" (106mm to 220mm)
- Capacity: 361' (110m)
- Type: Wax/Resin, Resin

### PRINTER BODY

- Dimensions (W x D x H): 17.4" x 19.5" x 11.8"  
(442mm x 495.3mm x 299.7mm)
- Weight: 43.4 lb (19.7 kg), excluding supplies

# 13

## CERTIFICATIONS

### FCC

This equipment has been tested and found to comply with the limits for a CLASS A digital device, pursuant to Part 15 of the FCC Rules. Operation is subject to the following two conditions: (1) This device may not cause harmful interference, and (2) this device must accept any interference received, including interference that may cause undesired operation. These limits are designed to provide reasonable protection against harmful interference when the equipment is operated in a commercial environment. This equipment generates, uses, and can radiate radio frequency energy, and if not installed and used in accordance with instructions may cause harmful interference to radio communications. Pursuant to Part 15.21 of the FCC Rules, any changes or modifications to this equipment not expressly approved by Graphic Products Company may cause harmful interference and void your authority to operate this equipment. To satisfy RF exposure requirements, keep all persons at least 20 cm away from the device during operation. (FCC KDB 784748, Section A.8.)

### ROHS

This product complies with EU Directive 2011/65/EU of 8 June 2011 as amended by EU Directive 2015/863 of 31 March 2015 and including amendments to the exemptions in Annex II.

### ICES-003 CLASS A NOTICE

This Class A digital apparatus complies with Canadian ICES-003. This device complies with ISDE Canada license-exempt RSS standard(s). Operation is subject to the following two conditions: (1) this device may not cause interference, and (2) this device must accept any interference, including interference that may cause undesired operation of the device.

Cet appareil numérique de la classe A est conforme à la norme NMB-003 du Canada. Le présent appareil est conforme aux CNR d'ISDE Canada applicables aux appareils radio exempts de licence. L'exploitation est autorisée aux deux conditions suivantes: (1) l'appareil ne doit pas produire de brouillage, et (2) l'appareil doit accepter tout brouillage radioélectrique subi, même si le brouillage est susceptible d'en compromettre le fonctionnement.

### WEEE

The symbol (right) means that your product and/or its battery shall be disposed of separately from household waste, according to the WEEE Directive (2012/19/EU) and national legislation. When this product reaches its end of life, take it to a collection point designated by local authorities. Separating and recycling the product and/or the battery at time of disposal, will help to conserve natural resources and ensure that the equipment is recycled in a manner that protects human health and the environment.

### IFETEL\*

La operación de este equipo está sujeta a las siguientes dos condiciones: (1) es posible que este equipo o dispositivo no cause interferencia perjudicial y (2) este equipo o dispositivo debe aceptar cualquier interferencia, incluyendo la que pueda causar su operación no deseada.

*\*This item may or may not be certified for these compliance marks. Graphic Products' equipment is certified on a case-by-case basis. For more information, please contact your account manager or email [info@DuraLabel.com](mailto:info@DuraLabel.com).*



# 14

## THIRD-PARTY SOFTWARE

This is a comprehensive list of third-party software and libraries used by Kodiak Max, organized by their license type. The licenses can be found in the Licenses file in Kodiak Max Manuals folder. While the provided software can be updated through the built-in Update utility or through software provided by Graphic Products, no additional user software can be installed on Kodiak Max.

### GNU GENERAL PUBLIC LICENSE VERSION 2 (GPL-2)

- obexftp: <https://sourceforge.net/projects/openobex/files/obexftp>
- openobex: <https://sourceforge.net/projects/openobex/files/openobex>
- obexpushd: <https://launchpad.net/ubuntu/+source/obexpushd>
- obexd: <https://www.kernel.org/pub/linux/bluetooth>
- rtl8188eu: <https://github.com/lwfinger/rtl8188eu>
- mtd-utils: <http://git.infradead.org/mtd-utils.git>
- mysql odbc: <https://dev.mysql.com/downloads/connector/odbc>
- psqldb: <https://ftp.postgresql.org/pub/odbc/versions/src>
- poppler: <http://poppler.freedesktop.org>
- cups-filters: <http://openprinting.org/download/cups-filters>
- potrace: <http://potrace.sourceforge.net/#license>
- u-boot: <https://github.com/u-boot/u-boot>

### GNU GENERAL PUBLIC LICENSE VERSION 3 (GPL-3)

- zint: <http://sourceforge.net/projects/zint>
- samba: <https://www.samba.org/samba/download>
- <https://github.com/KDE/libqapt/blob/master/COPYING>

### GNU LESSER GENERAL PUBLIC LICENSE VERSION 2.1 (LGPL-2.1)

- unixODBC: <http://www.unixodbc.org>
- qt-gstreamer: <https://gstreamer.freedesktop.org/src/>
- libqxt: <https://github.com/mnutt/libqxt>
- CuteLogger: <https://github.com/dept2/CuteLogger>
- qjson: <https://github.com/flavio/qjson/blob/master/COPYING.lib>

### GNU LIBRARY GENERAL PUBLIC LICENSE VERSION 2 (LGPL-2)

- freetds: <https://github.com/FreeTDS/freetds>

### GNU FREE DOCUMENTATION LICENSE VERSION 1.3 (FDL-1.3)

- Qt Spreadsheet Example:
- <http://doc.qt.io/qt-5/qtwidgets-itemviews-spreadsheetexample.html>

### BSD 3.0

- wpa\_supplicant: [https://w1.fi/cgiit/hostap/plain/wpa\\_supplicant/README](https://w1.fi/cgiit/hostap/plain/wpa_supplicant/README)

### MIT LICENSE

- QtXlsx: <http://qtxlsx.debao.me>
- ijs: <http://www.openprinting.org/download/ijms/download>
- lcms: <https://sourceforge.net/projects/lcms/files/lcms>
- seedrandom.js: <https://github.com/davidbau/seedrandom>

### CUSTOM LICENSES

- libsqlite3odbc: <http://www.ch-werner.de/sqliteodbc>
- openjpeg: <https://github.com/uclouvain/openjpeg>
- zlib(GPCompression): <https://github.com/madler/zlib>



# 15

## WARRANTIES

### 5-YEAR DURALABEL PRINTER WARRANTY

DuraLabel printers are warranted to be free from defects in materials and workmanship for a period of five (5) years from the date of purchase. Within this period, Graphic Products, Inc. will, at its sole option, repair or replace any components which fail in normal use. Such repairs or replacement will be made at no charge to the purchaser for parts or labor, provided that the purchaser shall be responsible for any transportation cost. This warranty does not cover loss, damages from accident, or equipment or parts which have been misused, altered, neglected, carelessly handled, used for purpose other than those for which the printer was manufactured, or damages resulting from unauthorized service.



### REPAIRS

Repairs are warranted for 90 days. If the original warranty is still in effect, repaired units will remain under their original warranty or for 90 days from the date of service, whichever is longer.

### WARRANTY DETAILS

The warranties and remedies contained herein are exclusive and in lieu of all other warranties whether express, implied, or statutory, including any liability arising under any warranty of merchantability or fitness for a particular purpose, statutory or otherwise. This warranty gives the purchaser specific legal rights, which may vary from state to state.

In no event shall Graphic Products be liable for any incidental, special, indirect, or consequential damages, whether resulting from the use, misuse, or inability to use the product for any reason including defect. Some states do not allow the exclusion of incidental or consequential damages, so the above limitation may not apply in all areas.

Graphic Products retains the exclusive right within all warranty periods to repair, replace, or offer a full refund of the purchase price at its sole discretion. Such remedy shall be the purchaser's sole and exclusive remedy for any breach of warranty.

General maintenance and cleaning of the DuraLabel printer is the purchaser's responsibility and is not covered by the warranty. Expendable items or parts such as label supply and ribbon are not covered by this warranty.



**NOTE:** *Specific preparation may be required before shipping. Please contact your DuraLabel representative to ensure correct return procedure: please call 800-788-5572 for details. Graphic Products, Inc. shall not be responsible for any loss or damages incurred during shipping.*







#### **COPYRIGHT INFORMATION**

No part of this manual, including the products and software described in it, may be reproduced, transmitted, transcribed, stored in a retrieval system, or translated into any language in any form or by any means, except documentation kept by the purchaser for backup purposes, without the express written permission of Graphic Products, Inc.

Products and corporate names appearing in this manual may or may not be registered trademarks or copyrights of their respective companies, and are used only for identification or explanation and to the owners' benefit, without intent to infringe.

Specifications and information contained in this manual are furnished for informational use only, and are subject to change at any time without notice, and should not be construed as a commitment by Graphic Products. Graphic Products assumes no responsibility or liability for any errors or inaccuracies that may appear in this manual.